



EXCLUSIVE ASSIGNMENT
RIVERSIDE SQUARE \$899,000
QUEEN ST E & BROADVIEW
2 BED | 2 BATH | PARKING & LOCKER
835 SQFT + 275 SQFT TERRACE

SUITE DETAILS

- 665 Queen St E
- 2 bed, 2 bath
- 835 sqft + 275 sqft terrace
- 2nd floor
- Parking & Locker
- **Asking \$899,000**
- **Original \$783,900**
- **Deposits Paid \$117,585 (15%)**
- Due on Occupancy: 5%
- Firm Occupancy: October 18, 2023

The suite is 835 sqft, 2 Bed, 2 Bath, parking and locker is listed at \$899,000 with occupancy scheduled for October 18, 2023. This spacious, split floorplan leaves no wasted space and features a large 275sqft terrace with gas BBQ hookup. The last building at Riverside Square, featuring a gorgeous rooftop pool with skyline views, 24 hour concierge and an awesome gym. Live in Toronto's ever-vibrant Downtown East, walk everywhere or grab the Queen streetcar right at your door. Get Downtown in 15 minutes or to the DVP in 1 minute. Easy access to the Distillery District, Finance Core, The Beach and steps to the future Ontario Transit Line.

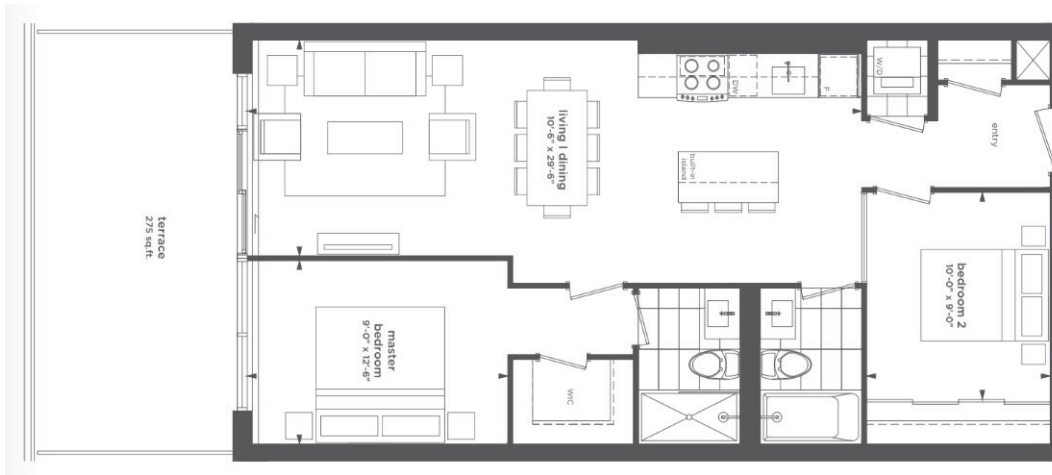




Similar open-concept layout, with extra room for a full dining table



Same kitchen and suite finish package



*Photos shown are from a similar suite with the same finish package.

Similar 275sqft terrace with enough room for a lounge area and dining table

